

SARS-CoV-2 (COVID-19) Spike 26P Antibody [1C3H9]
Infectious Disease, COVID-19
Catalog # ASC12212**Specification****SARS-CoV-2 (COVID-19) Spike 26P Antibody [1C3H9] - Product Information**

Application	WB, E
Primary Accession	P0DTC2
Other Accession	QHD43416
Host	Mouse
Clonality	Monoclonal
Isotype	IgG2b
Application Notes	WB: 1 µg/mL. Antibody validated: Western Blot in human samples. Anti-SARS-CoV-2 Spike 26P antibody detects all other SARS-CoV-2 variant Spike S1 protein, but not SARS-CoV-2 Gamma variant Spike S1 protein by ELISA. All other applications and species not yet tested.

SARS-CoV-2 (COVID-19) Spike 26P Antibody [1C3H9] - Additional Information

Gene ID	43740568
Alias Symbol	S
Other Names	
SARS-CoV-2 Spike 156-157EF antibody: Severe acute respiratory syndrome coronavirus 2 (SARS-CoV-2), Surface Glycoprotein, Spike protein	

Target/Specificity

It detects Spike S1 proteins of SARS-CoV-2 WT and variants except gamma variant.

Reconstitution & Storage

SARS-CoV-2 Spike 26P antibody can be stored at 4°C for three months and -20°C, stable for up to one year. As with all antibodies care should be taken to avoid repeated freeze thaw cycles. Antibodies should not be exposed to prolonged high temperatures.

Precautions

SARS-CoV-2 (COVID-19) Spike 26P Antibody [1C3H9] is for research use only and not for use in diagnostic or therapeutic procedures.

SARS-CoV-2 (COVID-19) Spike 26P Antibody [1C3H9] - Protein Information

Name S {ECO:0000255|HAMAP-Rule:MF_04099}

Function

[Spike protein S1]: Attaches the virion to the cell membrane by interacting with host receptor, initiating the infection. The major receptor is host ACE2 (PubMed:32142651, PubMed:32155444, PubMed:33607086). When S2/S2' has been cleaved, binding to the receptor triggers direct fusion at the cell membrane (PubMed:34561887). When S2/S2' has not been cleaved, binding to the receptor results in internalization of the virus by endocytosis using host TFRC and GRM2 and leading to fusion of the virion membrane with the host endosomal membrane (PubMed:32075877, PubMed:32221306, PubMed:34903715, PubMed:36779763). Alternatively, may use NRP1/NRP2 (PubMed:33082294, PubMed:33082293) and integrin as entry receptors (PubMed:35150743). The use of NRP1/NRP2 receptors may explain the tropism of the virus in human olfactory epithelial cells, which express these molecules at high levels but ACE2 at low levels (PubMed:33082293). The stalk domain of S contains three hinges, giving the head unexpected orientational freedom (PubMed:32817270).

Cellular Location

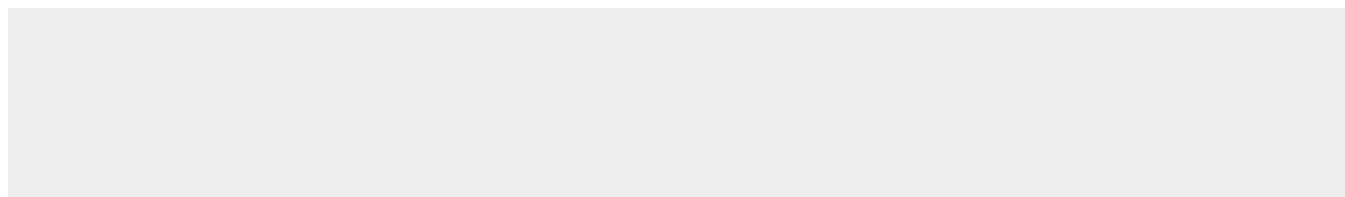
Virion membrane {ECO:0000255|HAMAP-Rule:MF_04099, ECO:0000269|PubMed:32979942}; Single-pass type I membrane protein {ECO:0000255|HAMAP-Rule:MF_04099, ECO:0000269|PubMed:34504087}. Host endoplasmic reticulum-Golgi intermediate compartment membrane {ECO:0000255|HAMAP-Rule:MF_04099, ECO:0000269|PubMed:34504087}; Single-pass type I membrane protein {ECO:0000255|HAMAP-Rule:MF_04099}. Host cell membrane {ECO:0000255|HAMAP-Rule:MF_04099, ECO:0000269|PubMed:34504087}; Single-pass type I membrane protein {ECO:0000255|HAMAP-Rule:MF_04099}. Note=Accumulates in the endoplasmic reticulum-Golgi intermediate compartment, where it participates in virus particle assembly. Some S oligomers are transported to the host plasma membrane, where they may mediate cell-cell fusion (PubMed:34504087). An average of 26 +/-15 S trimers are found randomly distributed at the surface of the virion (PubMed:32979942) {ECO:0000255|HAMAP-Rule:MF_04099, ECO:0000269|PubMed:32979942, ECO:0000269|PubMed:34504087}

SARS-CoV-2 (COVID-19) Spike 26P Antibody [1C3H9] - Protocols

Provided below are standard protocols that you may find useful for product applications.

- [Western Blot](#)
- [Blocking Peptides](#)
- [Dot Blot](#)
- [Immunohistochemistry](#)
- [Immunofluorescence](#)
- [Immunoprecipitation](#)
- [Flow Cytometry](#)
- [Cell Culture](#)

SARS-CoV-2 (COVID-19) Spike 26P Antibody [1C3H9] - Images



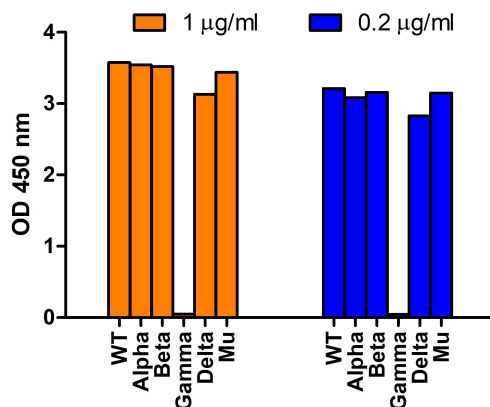


Figure 1 SARS-CoV-2 Spike 26P Antibodies Detect Spike S1 Proteins of all Variants except Gamma Variant in an ELISA

Coating Antigen: SARS-CoV-2 spike S1 proteins WT, alpha variant (B.1.1.7), beta variant (B.1.351), gamma variant (P.1), delta variant (B.1.617.2), and mu variant (B.1.621), 1 µg/mL, incubated at 4 °C overnight. Detection Antibodies: SARS-CoV-2 Spike 26P antibody, PM-9583, dilution: 200 and 1000 ng/mL, incubate at RT for 1 hr. Secondary Antibodies: Goat anti-mouse HRP at 1:5,000, incubate at RT for 1 hr.

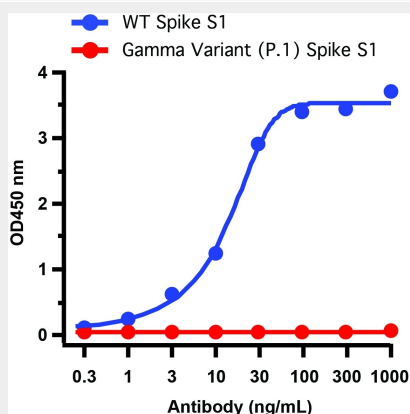


Figure 2 ELISA Validation of Spike 26P Antibodies with SARS-CoV-2 Gamma Variant Spike S1 Protein

Coating Antigen: SARS-CoV-2 spike S1 proteins of WT and Gamma variant (P.1), 1 µg/mL, incubate at 4 °C overnight. Detection Antibodies: SARS-CoV-2 Spike 26P antibody, PM-9583, dilution: 0.3-1000 ng/mL, incubated at RT for 1 hr. Secondary Antibodies: Goat anti-mouse HRP at 1:5,000, incubated at RT for 1 hr. **SARS-CoV-2 Spike 26P antibody detects WT spike S1 protein (10-300), but not Gamma variant spike S1 protein.**

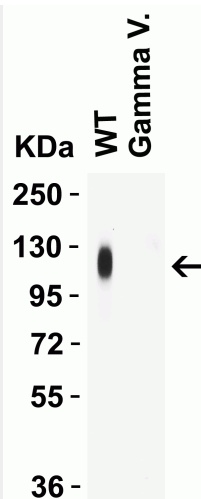


Figure 3 ELISA Validation of Spike 26P Antibodies with SARS-CoV-2 Gamma Variant Spike S1 Protein

Loading: 50 ng of SARS-CoV-2 spike S1 proteins, WT and Gamma variant (P.1). Detection Antibodies: Spike 26P antibody, PM-9583, 1 µg/mL, incubated at RT for 1 hr. Secondary Antibodies: Goat anti-mouse HRP at 1:5,000, incubated at RT for 1 hr. **SARS-CoV-2 Spike 26P antibody detects WT spike S1 protein (10-300), but not Gamma variant spike S1 protein.**

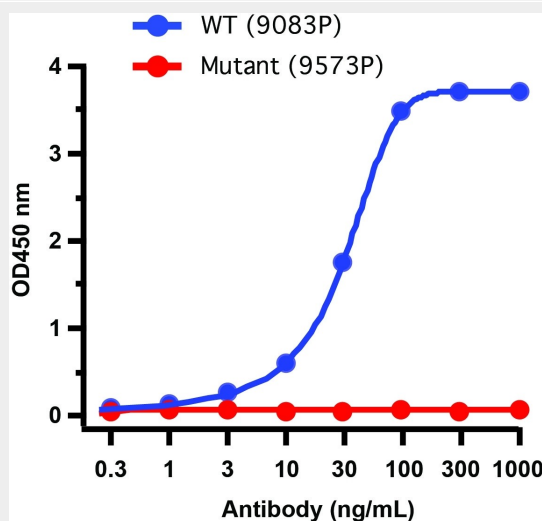


Figure 4 ELISA Validation of Spike 26P Antibodies with Mutant and WT Peptide

Coating Antigen: SARS-CoV-2 spike S1 peptides: WT (9083P) and Gamma variant (P.1) (9573P), 1 µg/mL, incubated at 4 °C overnight. Detection Antibodies: SARS-CoV-2 26P antibody, PM-9583, dilution: 0.3-1000 ng/mL, incubated at RT for 1 hr. Secondary Antibodies: Goat anti-mouse HRP at 1:5,000, incubated at RT for 1 hr. **SARS-CoV-2 spike 26P antibody detects WT peptide (26P, 9083P), but not Gamma variant spike S1 peptide (26S, 9573P).**

SARS-CoV-2 (COVID-19) Spike 26P Antibody [1C3H9] - Background

In January of 2021 a new lineage of SARS-CoV-2, known as P.1 and named Gamma variant, was discovered in Japan and later spread in Brazil. It is considered a VOC (variant of concern). This variant carries 10 mutations in spike protein, including N501Y, E484K and K417T in RBD, which can increase the affinity to the human ACE2 receptor. Enhanced transmission of the Gamma variant (P.1 lineage) was observed globally, which is 3.5 times more contagious as the original one. The Gamma variant affects the effectiveness of COVID19 vaccine and is resistant to neutralization to

some extent due to the immune escape E484K mutation.

SARS-CoV-2 (COVID-19) Spike 26P Antibody [1C3H9] - References

Voloch et al. Journal of Virology 2021, 95 (10): e00119-21.

Wang et al. Cell Host & Microbe 2021, 29(5): 747-751.

Wang et al. Nature 592, 616-622.